

# Z6

## 更換濾芯

所需時間約3-5分鐘

所需清潔用品：  
JURA 濾芯系統 (智能)



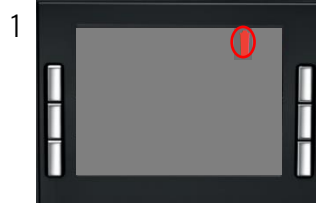
此快速參考指南並不代替《Z6使用說明書》。請確保閣下首先讀畢與留意有關的安全資訊及提示，以免發生意外。

»屏幕顯示«

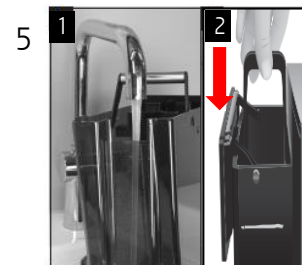
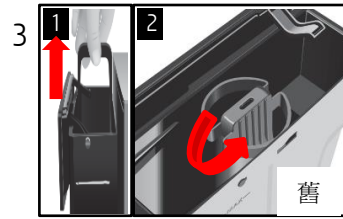
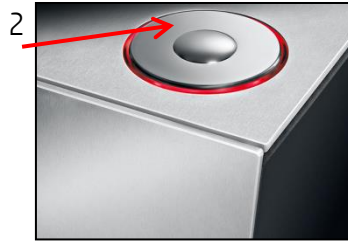


更換濾芯提示:

»Change filter (更換濾芯)«



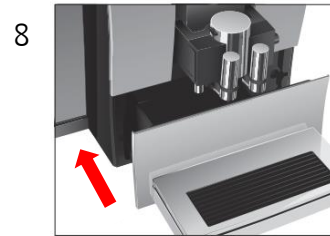
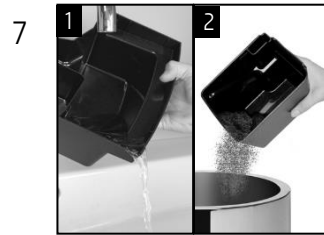
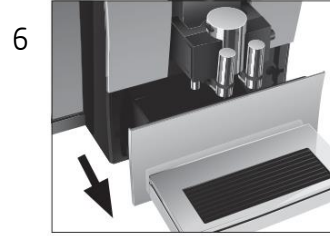
»Press the Rotary Switch (按下旋轉按鈕)«



» Change the filter (更換濾芯)/Saved (儲存)«

»Filter is being rinsed (濾芯正在清洗中)«

»Empty drip tray (清空廢水盤)«



»Filter rinsing completed (濾芯清洗完成)«