

水箱除垢

所需時間約45分鐘

所需清潔用品：
JURA雙效除垢藥片



此快速參考指南並不代替《Z6使用說明書》。請確保閣下首先讀畢與留意有關的安全資訊及提示，以免發生意外。

»屏幕顯示«

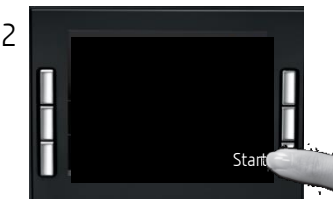
*將於數分鐘內完全溶解。

水箱除垢提示:

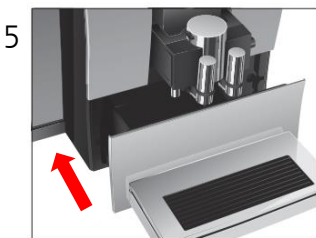
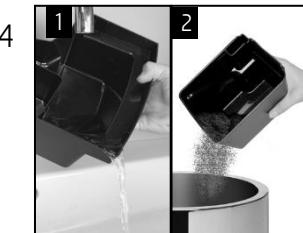
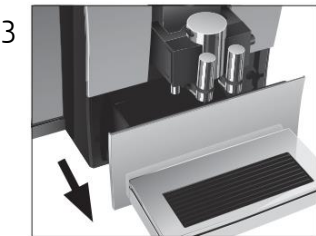
»Decalcify machine
(咖啡機除垢)«
按下旋轉按鈕



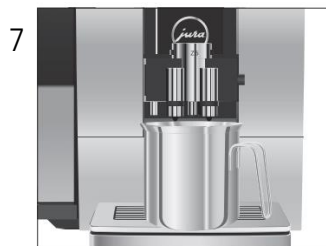
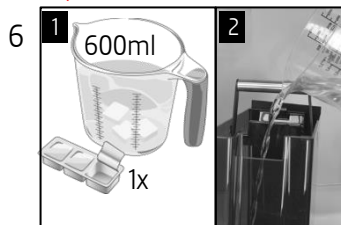
»Maintenance status
(保養頁面)«
»Descalc (除垢) «



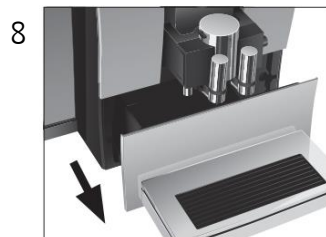
»Empty drip tray
(清空廢水盤)«



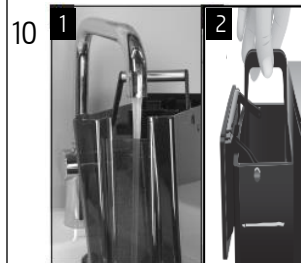
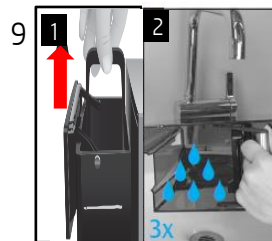
»Pour descaling agent* into
empty water tank (將已溶解
的除垢藥片溶液*放進水
箱)«



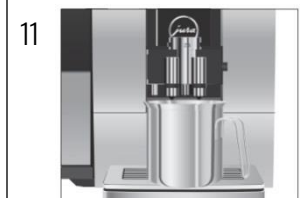
»Press Rotary Switch
(按旋轉按鈕)«
»Machine is being descaled
(咖啡機正在進行除垢)«
»Empty drip tray
(清空廢水盤)«



重覆步驟4-5
»Fill water tank
(為水箱注水)«



»Press Rotary Switch
(按旋轉按鈕)«



»Press Rotary Switch
(按旋轉按鈕)«
»Machine is being
descaled(咖啡機正在
進行除垢) «
»Empty drip tray
(清空廢水盤)«

